

WHERE
EXCEPTIONAL
TASTE LIVES

VERANDA

VOLUME 40
ISSUE 3

SANCTUARIES of Beauty

THE FOREVER
HOME ISSUE



GEOMETRY



BAMO INC.'S SUNROOM & POOL DECK
Curvy furnishings (like a Holly Hunt dining table) amplify the sunroom's cocoon-like atmosphere. Curtain fabric, Harlequin. The seating, tables, and umbrellas on the pool deck (right) are by Sutherland.

LESSON

A SHAPE-SHIFTING MIX OF FURNISHINGS, FINISHES, AND ACCESSORIES THRILLS AT THE 2026 KIPS BAY DECORATOR SHOW HOUSE PALM BEACH. INDOORS AND OUT, CLASS IS IN SESSION.



Dynamic Lines

"The sunroom and pool deck are meant to feel like a pause," says designer Sergio Mercado of Miami-based BAMO, Inc. In the former (left), an undulating wooden slatted ceiling creates "an architectural mirage that subtly shifts with changing light," he says. Oyster-hued curtains feature metallic embroidery that subtly echoes the ceiling's motion and creates "a tented, gallerylike enclosure that enhances light play and movement." Curves loosen into refined lines on the pool deck (above), where slender woven seating and elemental teak-and-stone coffee tables "balance comfort with sculptural presence," Mercado says.

FIREFINISH INTERIORS' SHOWER COURTYARD

Corbin Bronze sculptures (David Sutherland) ground the sun-washed space, while brushed-brass shower fixtures (Kohler) elevate morning routines. Marble flooring, Artistic Tile.



Retro Curves

Creative contours appear throughout the house. “After years of straight lines everywhere, softer shapes just feel right again,” says designer Rayana Schmitz of South Florida-based Firefinish Interiors. In her spa-like courtyard (above), a jacquard ottoman with a serpentine raffia bolster echoes the flooring’s half-moon mosaic motif and the shower wall’s rounded edges. In Palm Beach- and New York-based designer Sherrill Canet’s primary bedroom (left), a gentle palette of cloud-like whites sets a serene tone, while sculptural furnishings—like a custom arched console—dial up the monochromatic sanctuary’s visual intrigue. And in New York- and South Florida-based LTA Interiors’ game room, whimsical shapes—from the burl wood mah-jongg table to the groovy cornices—elevate the space’s playful sensibility. The sociable corner banquette’s crescent form speaks to the firm’s design philosophy, says designer Lynn Berney. “It’s made for comfort, conversation, and connection, encouraging guests to stay and enjoy the moment.”

SHERRILL CANET INTERIORS' PRIMARY BEDROOM

A textural, shimmering white wallpaper by York Wallcoverings wraps the space; bright and airy by day, the luminous backdrop becomes a soothing envelope by night.

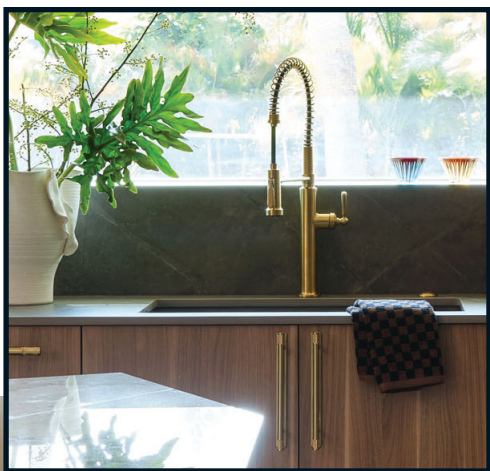
LTA INTERIORS' GAME ROOM

Graphic pink patterns, from the dusty-rose curtains (fabric, Perennials) to the blush mosaic-like wallcovering, lend feminine energy to the lounge. Velvet sofa fabric, Perennials.



Unexpected Angles

“A kitchen no longer needs to start with what’s required, but rather with what’s possible,” says Boca Raton-based designer Leanne Yarn-Alcalay of Yarn Design Associates. “I was inspired to create a gathering space that functions like a kitchen but doesn’t *feel* like one.” The room’s pièce de résistance—an avant-garde triangular island—breaks with convention. “Angling the slab felt more organic in form,” says the designer, who leaned into the sculptural silhouette, paired with metallic appliances and accessories, to bring living room-like glamour to the space. And to the glimmering leaf-inspired lighting installation, we raise a Champagne toast. ✦



YARN DESIGN ASSOCIATES' KITCHEN

The asymmetrical island blends two Cosentino Dekton stones to create a graphic effect. Metallic accents, like the brushed-brass Kohler faucet (inset), dress the space for evening entertaining.



SEE THE ENTIRE HOUSE

VERANDA thanks its 2026 Kips Bay Decorator Show House Palm Beach sponsors: Cosentino, Kohler, Morris & Co., Perennials and Sutherland, and York Wallcoverings. For a look at every room, scan this code or visit veranda.com/kips-bay-decorator-show-house-palm-beach.

